

Christmas Trees

by Deborah V. Gardner

These simple Christmas Trees can be embellished with beads or sequins.

Materials:

Worsted weight, dark brown (3 yds) and green (25 yds)

Samples were knitted in Cascade 220, 100% Peruvian Wool, 100 gr/220 yds, Dark Chocolate #9557, Forest Green #8267, Christmas Green #8894, white #8505

US 7 dpns (4.5mm); because this is a small item, I suggest 5 or 6" bamboo needles
yarn needle

stuffing

Cardboard or plastic canvas cut to fit the bottom

Size: 2½" at the base, 5" height

Gauge: Not critical. To achieve size, 5½ stitches equals 1"

Abbreviations

Inc	Right Lifted Increase: Insert the right-hand needle in the right side of the stitch 1 row below the stitch on the left-hand needle. Lift it and place on left-hand needle. Knit in the front leg of the stitch.
K	Knit.
K2tog	Knit two stitches together.
P	Purl.
P2tog	Purl two stitches together.
P2togtbl	Purl two stitches together through back loops.
Rnd	Round.
SSK	Slip the first stitch knitwise; slip the second stitch purlwise; knit in the back loops of the two stitches.
St(s)	Stitch(es).
St st	Stockinette stitch.

Notes:

- Directions for provisional cast on and Emily Ocher's cast on are on the last page.
- When provisionally casting on, the last stitch you pick up will be a ½ st. Be sure to pick this up when removing the waste yarn.
- Directions for a provisional cast on are included on the last page.
- On Rnds 9 and 27 you will be instructed to knit a jogless jog. This reduces the step-up effect of changing color.

Trunk

With the crochet hook and Dark Chocolate, cast on 6 sts using Emily Ocher's cast on.

Rnd 1: K.

Rnd 2: *Inc, k1, repeat from * around. (12 sts)

Rnds 3 – 6: K.

Bind off. Cut yarn leaving an 8" tail. Weave in beginning tail.

Stockinette Tree

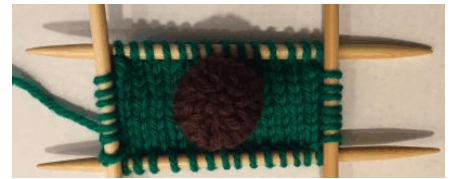
Base

Using a provisional cast on, cast on 14 sts.

With Green, beginning with a k row, st st for 11 rows.

Remove provisional cast on and put stitches on needle. Be sure to add the ½ st; 14 sts total.

With another (2nd) needle, pick up and knit 7 sts on one side; with a third needle, k14; with the 4th needle, pick up and k 7 sts on the side. (42 sts)



Base

Stuff trunk and sew to middle of the rectangle.

Tree

Rnds 1 – 4: K.

Weave in the end.

Rnd 5: (SSK, k10, k2tog, SSK, k3, k2tog) 2 times. (34 sts)

Rnd 6 – 12: K.

Weave in end; place stiffening piece in bottom of tree.

Rnd 13: (SSK, k8, k2tog, k2, k2tog, k1) 2 times. (28 sts)

Rnds 14 – 18: K.

Rnd 19: (SSK, k6, k2tog, k1, k2tog, k1) 2 times. (22 sts)

Begin to stuff and continuing stuffing as the piece gets longer.

Rnd 20 – 22: K.

Rnd 23: (SSK, k4, k2tog, k1, k2tog) 2 times. (16 sts)

Rnd 24 and 25: K.

Rnd 26: (SSK, k2, k2tog, k2tog) 2 times. (10 sts)

Rnd 27: K.

Rnd 28: (SSK, k2tog, k1) 2 times. (6 sts)

Cut yarn leaving a 12" length. Thread through live stitches twice; finish stuffing; tighten; weave in end.



Reverse Stockinette Tree

Knit the Trunk in brown and the base in Green.

Rnds 1 – 4: p.

Weave in the end.

Rnd 5: (P2togtbl, p10, p2tog, p2togtbl, p3, p2tog) 2 times. (34 sts)

Rnd 6 – 12: P.

Weave in end; place stiffening piece in bottom of tree.

Rnd 13: (P2togtbl, p8, p2tog, p2, p2tog, p1) 2 times. (28 sts)

Rnds 14 – 18: P.

Rnd 19: (P2togtbl, p6, p2tog, p1, p2tog, p1) 2 times. (22 sts)

Begin to stuff and continuing stuffing as the piece gets longer.

Rnd 20 – 22: P.

Rnd 23: (P2togtbl, p4, p2tog, p1, p2tog) 2 times. (16 sts)

Rnd 24 and 25: P.

Rnd 26: (P2togtbl, p2, p2tog, p2tog) 2 times. (10 sts)

Rnd 27: P.

Rnd 28: (P2togtbl, p2tog, p1) 2 times. (6 sts)

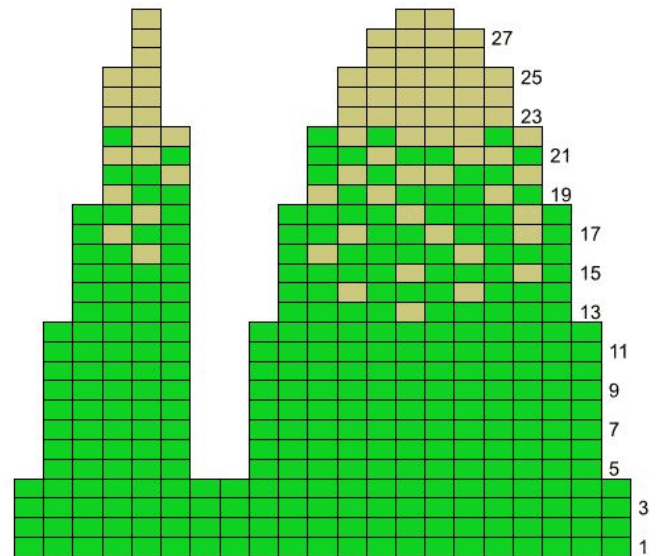
Cut yarn leaving a 12" length. Thread through live stitches twice; finish stuffing; tighten; weave in end.

Snow-Covered Tree

Work as for Stockinette

Tree through Rnd 12.

Continue working as for Stockinette Tree using the chart to knit the “snow.”



Snow-Covered Tree

Seed-Stitch Tree

Knit the Trunk in brown and the tree in Green.

Rnd 1: *P1, k1 * around.

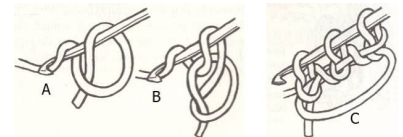
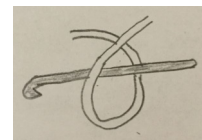
Rnd 2: *K1, p1 * around.

Continue as for Stockinette Stitch Tree except work in seed stitch as established. Because of the decreases, the pattern cannot be perfectly maintained. Be sure to maintain pattern as established on each of the sides.



Emily Ocher's Circular Cast-on.

1. Make a ring. Do not pull it tight; keep it loose. Grasp the loop where the strands meet with your left thumb and index finger. You can make the loop with the tail going up. You will then have to weave in the tail.
 2. Insert the hook into the loop from front to back. Grab the yarn with the hook (yo) and bring through the loop. You now have one loop on the hook.
 3. Insert the hook into the loop again; you will be going under the yarn tail as well. Hook the yarn (yo) and bring through the loop. Hook the yarn again and bring through the loop on the hook as if you were making a chain. You now have two loops on the hook. Repeat this step until you have the required number of loops.
 4. Carefully replace the hook with your needles and begin knitting in the round. After you have finished a few rounds, pull the tail to close up the circle and weave in.
- You now have a nice, tight circle with no hole in the middle.



Provisional Cast On

- Using a smooth yarn in a contrasting color, make a slip knot and place it on a crochet hook the same size as the needles. (Figure 1)
- With yarn in back of the knitting needle, bring the hook over the top of the needle (Figure 2), catch the yarn and pull it through the loop on the hook. (Figure 3) Repeat this step until the number of stitches desired has been cast on.
- Chain a few stitches. Cut the yarn and pull through the last chained stitch. When you are ready to unravel the waste yarn, this will be the end that you gently pull to remove the waste yarn.
- Figure 4 shows the completed cast on.

