

Melt the ICE Coasters

by Deborah V. Gardner

Needles & Skeins, a yarn shop in Saint Louis Park, MN created the Melt the ICE hat in response to the ICE invasion of its state. It sells the pattern for \$5 on Ravelry.com. As of March 5, 2026, sales of the pattern have raised over \$700,000 for immigrant services in that state. These coasters are my humble homage to the original red protest hats.

Materials

About 20 grams worsted weight yarn in each color. Samples used
Cascade 220, 100% Peruvian Highland Wool: 8010 Natural and
9404 Ruby.
US size 5 (3.75mm) straight needles or the size to obtain gauge
Yarn needle
4" x 4" cork board, preferably with adhesive back (available on Amazon)
Crochet hook, US size 5 (3.75 mm)

Gauge:

23 stitches x 29 rows = 4" in stockinette stitch

Note: Do not worry if some of the stitches are irregular (especially when switching yarns). The coaster flattens out nicely with use!

Directions

Front of coaster

With MC, cast on 25 sts.

Row 1: P.

Continue working the chart in stockinette stitch changing color as indicated.

Bind off in knit.

Back of coaster

With MC, cast on 25 sts

Knit 31 rows in stockinette stitch beginning with a purl row.

Bind off in knit.

Weave in all ends.

Block.

Crochet the squares together with the cork between them. If the cork has an adhesive backing, be sure to remove the paper and affix to the square with the letter.

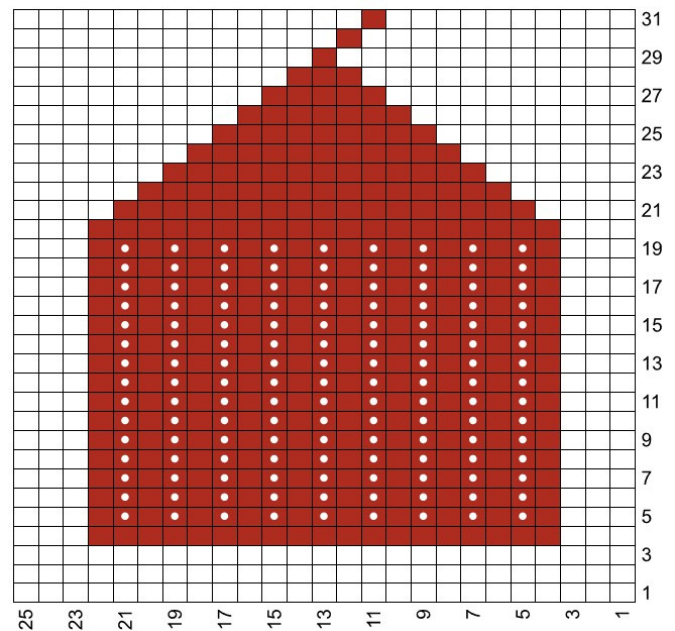
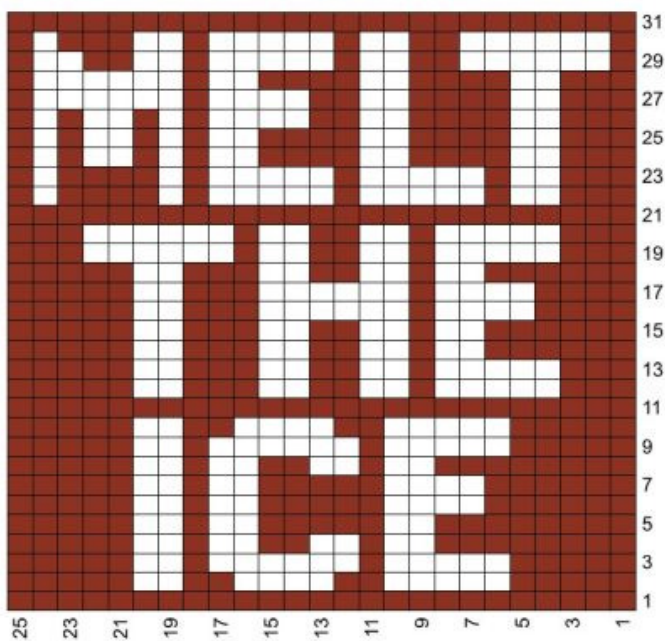


Tips:

- At the top and bottom, crochet a cast-on edge to a bound-off edge. Start at the middle of the coaster top or bottom for a neater finish.
- See special binding off and finishing instructions for the Hat coaster.
- When crocheting the sides together, skip every 3rd stitch. Remember, knit stitches are shorter than their width. By skipping every 3rd stitch, the coaster will not have wavy edges.
- On page 3, see the directions about how to finish off the crocheted border.

Tassels

- Cut three 10" pieces of yarn for each tassel.
- Use a yarn needle to thread the 3 pieces through one of the bound-off stitches. Be sure to attach the yarn on the Hat coaster to the red bound off stitch.
- Braid for about 1". Tie off.
- Use the tie ends as part of the tassel.
- Trim ends to desired length.



- RS: k; WS: p
- RS: p; WS: k

Special instructions for the Hat coaster

- Bind off until one stitch before the red stitch. Knit the white stitch that is one before the red stitch with red yarn. Continue binding off as usual with the white yarn. (Figure 1)
- When crocheting the coaster together, use red yarn to crochet the one red bound off stitch.



Figure 1

Finishing the border so that it looks seamless

